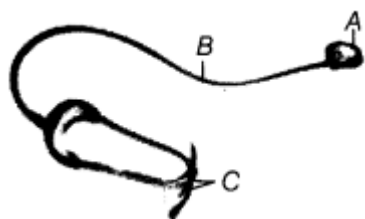


**KENDRIYA VIDYALAYA, PANISAGAR**  
**AUTUMN HOLIDAY HOMEWORK**  
**CLASS VII**  
**SUBJECT- SCIENCE**

**Q1.** Name the process and the organ which help in removing the following wastes from the body.

- (a) Carbon dioxide
- (b) Undigested food
- (c) Urine
- (d) Sweat

**Q2.** Observe given figure and answer the given question.



- (a) Name the instrument.
- (b) Label the parts A, B and C.

**Q3.** Paheli noticed water being pulled up by a motor pump to an overhead tank of a five storeyed building. She wondered how water moves up to great heights in the tall trees standing next to the building. Can you tell why?

**Q4.** Human have two major organs that perform transport of materials. Organ 'A' is bean-shaped and dark red in colour lie just above the waist. It helps in 'removal of 'Q', a waste material from blood. The organ 'S' is the opening at the end of the urinary bladder through which the waste material is eliminated.

Organ 'B' lies in the chest cavity slightly tilted towards the left side. It pumps continuously and pours liquid 'C' into arteries and through very fine tube-like structure 'D' distributes the liquid to various parts of the body. What are the name of these organs.

**Q5.** What is a bud? Which organism reproduce by budding? Given the diagrammatic representation of budding in a plant.

**Q6.** How do the plants like sugarcane, potato and rose reproduce when they cannot produce seeds?

**Q7.** Insects are called agents of pollination. How do they aid in process of pollination?

**Q8.** Ria went to a plant nursery with her mother. The gardner approached them and asked about their choice of plant. Ria's mother wanted a flowering plant with fragrance. Gardner showed them a plant and told them that this variety has been prepared by a method of vegetative propagation of stems.

Ria grew curious and asked some questions to gardner.

- (a) What is vegetative propagation?
- (b) What are methods of producing new plants using stem?
- (c) Name any two plants where this method of reproduction is used. Is this a asexual or sexual method?
- (d) What values do you observe in Ria?

1. List five rational numbers between:

(i)  $-1$  and  $0$       (ii)  $-2$  and  $-1$       (iii)  $-\frac{4}{5}$  and  $-\frac{2}{3}$       (iv)  $-\frac{1}{2}$  and  $\frac{2}{3}$



2. Write four more rational numbers in each of the following patterns:

(i)  $\frac{-3}{5}, \frac{-6}{10}, \frac{-9}{15}, \frac{-12}{20}, \dots$       (ii)  $\frac{-1}{4}, \frac{-2}{8}, \frac{-3}{12}, \dots$

Rationalised 2023-24

(iii)  $\frac{-1}{6}, \frac{2}{-12}, \frac{3}{-18}, \frac{4}{-24}, \dots$       (iv)  $\frac{-2}{3}, \frac{2}{-3}, \frac{4}{-6}, \frac{6}{-9}, \dots$

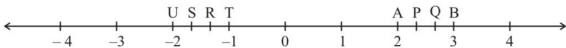
3. Give four rational numbers equivalent to:

(i)  $\frac{-2}{7}$       (ii)  $\frac{5}{-3}$       (iii)  $\frac{4}{9}$

4. Draw the number line and represent the following rational numbers on it:

(i)  $\frac{3}{4}$       (ii)  $\frac{-5}{8}$       (iii)  $\frac{-7}{4}$       (iv)  $\frac{7}{8}$

5. The points P, Q, R, S, T, U, A and B on the number line are such that,  $TR = RS = SU$  and  $AP = PQ = QB$ . Name the rational numbers represented by P, Q, R and S.



6. Which of the following pairs represent the same rational number?

(i)  $\frac{-7}{21}$  and  $\frac{3}{9}$       (ii)  $\frac{-16}{20}$  and  $\frac{20}{-25}$       (iii)  $\frac{-2}{-3}$  and  $\frac{2}{3}$   
 (iv)  $\frac{-3}{5}$  and  $\frac{-12}{20}$       (v)  $\frac{8}{-5}$  and  $\frac{-24}{15}$       (vi)  $\frac{1}{3}$  and  $\frac{-1}{9}$   
 (vii)  $\frac{-5}{-9}$  and  $\frac{5}{-9}$

7. Rewrite the following rational numbers in the simplest form:

(i)  $\frac{-8}{6}$       (ii)  $\frac{25}{45}$       (iii)  $\frac{-44}{72}$       (iv)  $\frac{-8}{10}$

8. Fill in the boxes with the correct symbol out of  $>$ ,  $<$ , and  $=$ .

(i)  $\frac{-5}{7}$    $\frac{2}{3}$       (ii)  $\frac{-4}{5}$    $\frac{-5}{7}$       (iii)  $\frac{-7}{8}$    $\frac{14}{-16}$   
 (iv)  $\frac{-8}{5}$    $\frac{-7}{4}$       (v)  $\frac{1}{-3}$    $\frac{-1}{4}$       (vi)  $\frac{5}{-11}$    $\frac{-5}{11}$   
 (vii)  $0$    $\frac{-7}{6}$



1. Find the sum:

$$(i) \frac{5}{4} + \left(\frac{-11}{4}\right)$$

$$(ii) \frac{5}{3} + \frac{3}{5}$$

$$(iii) \frac{-9}{10} + \frac{22}{15}$$

$$(iv) \frac{-3}{-11} + \frac{5}{9}$$

$$(v) \frac{-8}{19} + \frac{(-2)}{57}$$

$$(vi) \frac{-2}{3} + 0$$

$$(vii) -2\frac{1}{3} + 4\frac{3}{5}$$

2. Find

$$(i) \frac{7}{24} - \frac{17}{36}$$

$$(ii) \frac{5}{63} - \left(\frac{-6}{21}\right)$$

$$(iii) \frac{-6}{13} - \left(\frac{-7}{15}\right)$$

$$(iv) \frac{-3}{8} - \frac{7}{11}$$

$$(v) -2\frac{1}{9} - 6$$

3. Find the product:

$$(i) \frac{9}{2} \times \left(\frac{-7}{4}\right)$$

$$(ii) \frac{3}{10} \times (-9)$$

$$(iii) \frac{-6}{5} \times \frac{9}{11}$$

$$(iv) \frac{3}{7} \times \left(\frac{-2}{5}\right)$$

$$(v) \frac{3}{11} \times \frac{2}{5}$$

$$(vi) \frac{3}{-5} \times \frac{-5}{3}$$

4. Find the value of:

$$(i) (-4) \div \frac{2}{3}$$

$$(ii) \frac{-3}{5} \div 2$$

$$(iii) \frac{-4}{5} \div (-3)$$

$$(iv) \frac{-1}{8} \div \frac{3}{4}$$

$$(v) \frac{-2}{13} \div \frac{1}{7}$$

$$(vi) \frac{-7}{12} \div \left(\frac{-2}{13}\right)$$

$$(vii) \frac{3}{13} \div \left(\frac{-4}{65}\right)$$

HOME – WORK FOR NEXT POOJA VACATION

( आगमि ०००००००००० ०० ००ए ०००-०००००

)

००

ब्रह्मक – – 17 / 10 / 23

००

1. "०००० ०० ००००" ००० ०० ००००००० 3 ०० ००००००० ००००० ०  
०० - ००००००० ( ००० - ०००००० - ००००० ०००० )

2. "००००००००००००" - ००० ००० ०००० ०० ००००० ०० ००० ०० ?

3. ०००० ०००० ०००० ०० ? ०००० ०० ००००० ००० ००० ००० ००० ००-००  
०००००० ००००० ०

4. '००००००००' - ०० ०० ००००००००० ००००० ०

**K V PANISAGAR**  
**HOLIDAY HOMEWORK (ENGLISH)**  
**CLASS VII**

- 1) Complete the exercise from the chapter “Chandni”.
- 2) Complete the MDP Project.

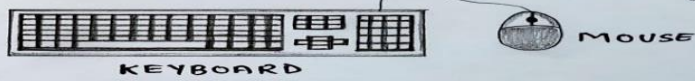
KENDRIYA VIDYALAYA PANISAGAR  
(AUTUMN BREAK HOMEWORK-2023-24)

**CLASS VII    SUBJECT : SOCIAL SCIENCE**

1. Write an article on *“Negative Impact Of Social Media On Youth And Children”*
2. “Wildlife Under Threat” prepare an article on endangered animal life in India.
3. On an outline map of India, mark the medieval towns and cities in India.
4. Life style of Tribal communities in India.

Note: All the above work should be done in the A4 white paper

1. Prepare MDP & Learner’s Diary.
2. Prepare Art Integrated Project on Paired State(uttarakhand).
3. Complete your notebook work.
4. Prepare your portfolio.



# Kendriya Vidyalaya Panisagar

## Autumn Break Holiday Homework

Subject:- Computer

Class:- 7

a. Shortcut Key:-

- Undo:-
- Redo:-
- Right alignment:-

b. Full form:-

- WAN:-
- HTML:-
- BIOS:-

c. Binary Number System:-

36	41	52
----	----	----

- d. Make a mark sheet on MS Excel sheet. There will be 4 students & 4 Subjects on it.
- e. Draw the Computer Network Topology & write the name of all these.